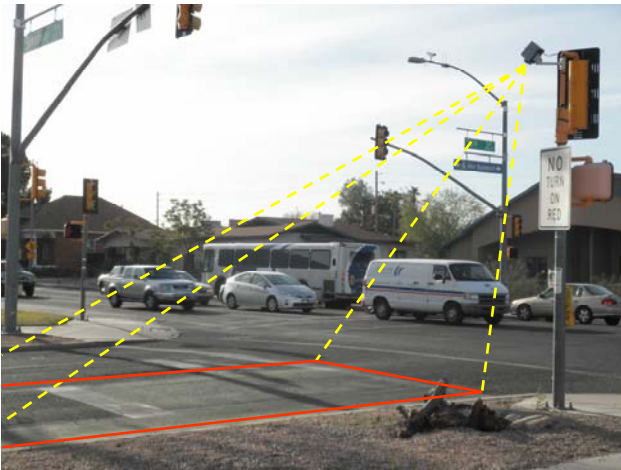


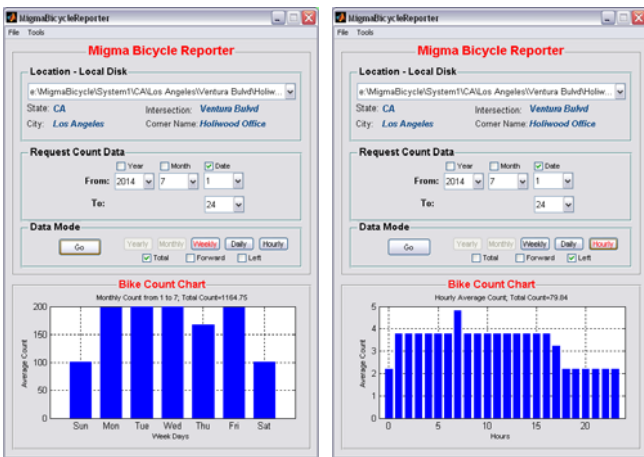


MigmaBicycle™ for Bicycle Detection and Counting



MigmaBicycle™ is an outdoor passive bicycle detector and counter at bike paths or shared roadways. It can be used to place bike calls when bicyclists are detected in forward and left turn directions. Bicycle counts are stored, 24/7, and their summary reports can be easily generated and saved in Excel based on average counts in hourly, daily, weekly, monthly or annually formats.

- ▲ High resolution IR LED stereo camera for day/night detection
- ▲ Industrial single board computer (SBC) running Windows XPe
- ▲ Robust bicycle detection/counting using stereo vision analysis
- ▲ Bicycle counts and/or images are saved locally in USB drive and/or remotely at data server or Amazon Cloud
- ▲ Stored data are organized in terms of timestamps and location names such as state, city, intersection and corner
- ▲ Standalone system utilizing city network for data transmission
- ▲ Cameras are powered over Ethernet (PoE)
- ▲ Simple wiring and connection using CAT5e Ethernet cables



**Remote
configuration
and diagnosis**

MigmaBicycle™ is designed to meet the traffic engineering requirements for bicycle detection and counting in the outdoor environment. Built-in IR LEDs are turned on under the low illumination for night time operation. Specifications:

- ▲ Image Sensor: 1/3" Sony CCD Chip
- ▲ Camera Mounting Height: 10 ~ 15 ft
- ▲ Activation Time: 1 ~ 2 s
- ▲ IR Range: 100 ft (~30m) in total darkness
- ▲ S/N Ratio: ≥ 48 dB
- ▲ Cable and Power: Cat5e and power over Ethernet (PoE)
- ▲ Operating Temperature: -22 °F ~ 158 °F (-30 °C ~ 70 °C)
- ▲ Operating Humidity: 0% ~ 96%
- ▲ Operating Environment: All weather, day and night
- ▲ Failsafe and watchdog timer support



Corporate Headquarters
Migma Systems, Inc.
1600 Providence Highway
Walpole, Massachusetts 02081

Contact Information
Web: <http://www.migmapd.com>
Sales: sales@migmapd.com
Support: support@migmapd.com
Phone: 508-660-0328
Fax: 508-660-0288

Migma