

### Section 1

#### General Description

MigmaPD™ Viewer is a graphical software tool for system remote viewing, diagnosis and configuration. Systems at multiple locations can be accessed.

### Section 2

#### Downloading MigmaPD™ Viewer

[http://www.migmapd.com/document/MigmaPD\\_setup.exe](http://www.migmapd.com/document/MigmaPD_setup.exe)

#### Installing MigmaPD™ Viewer

After downloading the installation program, run *MigmaPD\_setup.exe* and follow the instructions shown on the computer monitor.

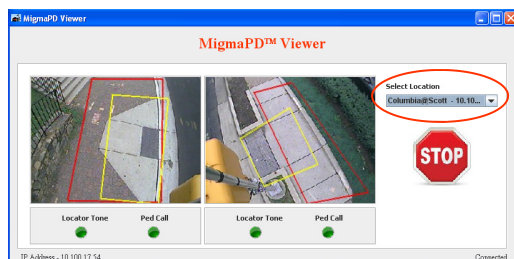
#### Changing Location and IP Address

MigmaPD™ Viewer can select the IP address of the remote system based on its location name. Please follow the steps below:

1. Go to *C:/Program Files/Migma Systems*
2. Open the file, *Location.txt*
3. Enter the location name and related IP address. You can overwrite the default setting:

Location            000.000.000.000

4. Save the file
5. Run MigmaPD™ Viewer and select the location for viewing



Note: Multiple locations can be entered as well.

#### Remote Configuration

You can remotely change the detection zones and configuration parameters. Please follow the steps below:

1. Run MigmaPD™ Viewer
2. Click on button, **STOP**
3. In the message window, click on button, **Yes**
4. In the *Windows Remote Desktop Connection* app, enter the IP address of the desired location
5. Enter the following username and password  
Username: **administrator**  
Password: **aaaa**
6. Follow the instructions for configuration. Instructions can be downloaded at <http://www.migmapd.com>
7. When done, double-click on the icon, **Save**. This will also reboot the remote system



**You must double-click on Save icon to reboot the remote system.**

Wait for a few minutes for the remote system to restart. MigmaPD™ Viewer will automatically reconnect.

#### Understanding MigmaPD™ Viewer

MigmaPD™ Viewer has a number of components designed for remote configuration and diagnosis.

